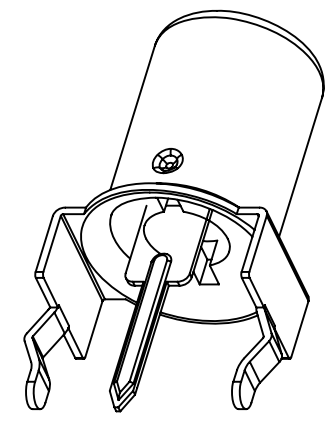


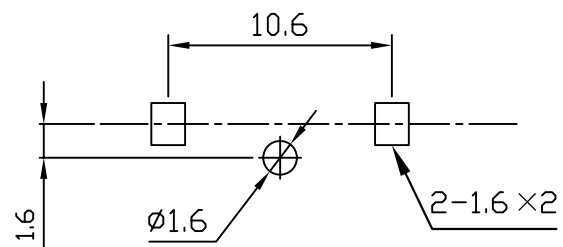
REVISIONS				
LTR	DESCRIPTION	DATE	REVISED	APPROVED



Model No.	COLOR
RCA-032-13R	RED
RCA-032-13W	WHITE
RCA-032-13Y	YELLOW
RCA-032-13GR	GREEN
RCA-032-13BL	BLUE
RCA-032-13O	ORANGE
RCA-032-13B	BLACK

DATE CODE  
Y:YEAR  
WW:WEEK

LEAD FREE



T:1.6 Dimensions of PC board holes  
Tolerance :  $\pm 0.05$ (Printed-bottom view)

UNLESS OTHERWISE SPECIFIED TOLERANCES

DECIMALS:	ANGLES:
X $\pm 0.3$	X $\pm 1^\circ$
X.X $\pm 0.2$	X.X $\pm 0.5^\circ$
X.XX $\pm 0.1$	
X.XXX $\pm 0.05$	

4	INSULATOR	1	PBT+15%GF(PBT4815)	UL-94V0(BLACK)
3	WASHER	1	PBT+15%GF(PBT4815)	UL-94V0
2	TERMINAL	1	C2680 t=0.3	All over CuSn 40u" Min
1	OUTER CONTACT	1	C2680 t=0.4	All over CuSn 40u" Min

LTR	PART NAME	QTY	MATERIAL	REMARK
DWN	LILY	DATE	2014.02.19	NAME PIN JACK
CHKD	ANDY	DATE	2014.02.19	
APVD	JON	DATE	2014.02.19	
UNIT: mm				CAT. NO. RCA-032-13
In Zheng Enterprise co., Ltd.				DWN.NO. CM-032-13
				001