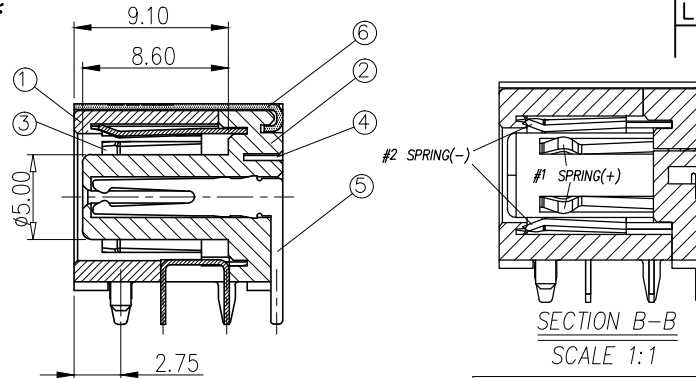
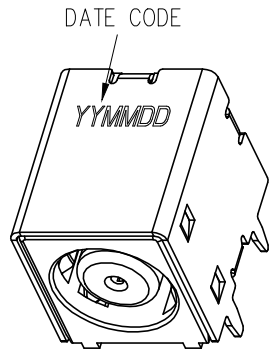
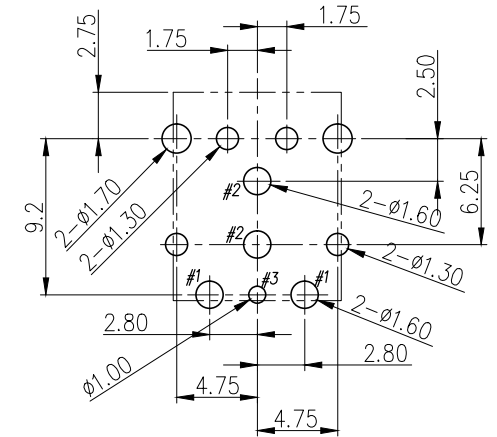
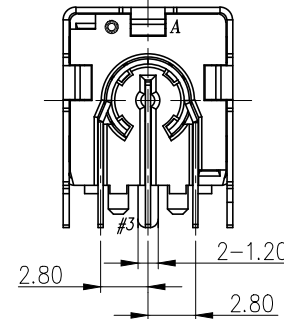
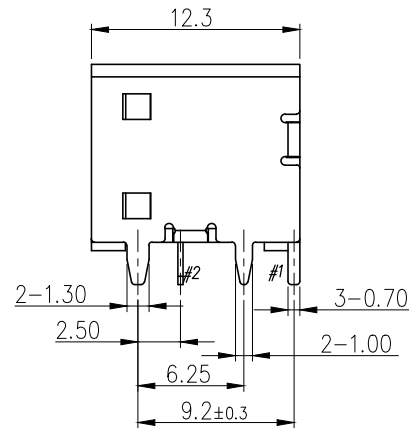
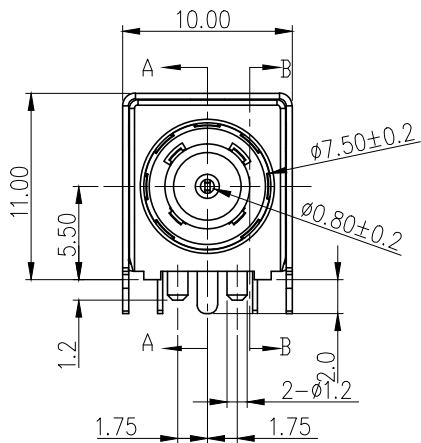
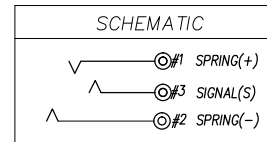


\* RoHS COMPLIANT \*

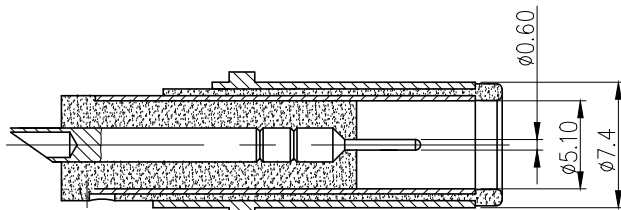


SECTION A-A  
SCALE 1:1

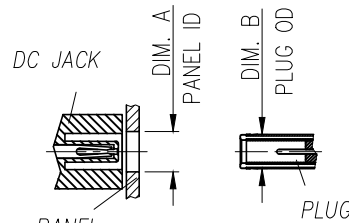
SECTION B-B  
SCALE 1:1



RECOMMENDED P.C.B LAYOUT  
TOP VIEW (TOLERANCE: ±0.05)



MATING PLUG: OD  $\phi 7.4$  ; ID  $\phi 0.6$   
Tolerance:  $\pm 0.05$



DIM. A-DIM. B  $\leq 0.5$   
FIGURE 1

UNLESS OTHERWISE SPECIFIED, TOLERANCE ON DECIMAL:  $\pm 0.3$

* REVISIONS				
LTR	DESCRIPTION	DATE	REVISED	APPROVED

SPECIFICATIONS:

- ELECTRICAL CHARACTERISTICS:
  - RATING: 30V 10A
  - CONTACT RESISTANCE: 30mΩ MAX.(INITIAL)
  - DIELECTRIC WITHSTANDING VOLTAGE: 500V AC FOR ONE MINUTE.
  - INSULATION RESISTANCE: 100MΩ MIN. MEASURED BY 500 VDC
- MECHANICAL CHARACTERISTICS:
  - INSERTION FORCE : 3.0 KGF Max.
  - WITHDRAWAL FORCE : 0.35 KGF Min.
- LIFE TEST: 5,000 CYCLES MIN.

6	SHELL	1	BRASS 0.35T	Ni PLATED	
5	SIGNAL (S)	1	COPPER ALLOY 0.3T	GOLD FLASH	
4	CONTACT (+)	1	COPPER ALLOY 0.3T	GOLD FLASH	
3	SPRING (-)	1	COPPER ALLOY 0.3T	GOLD FLASH	
2	COVER	1	HIGH TEMP. THERMOPLASTIC	UL94V-0(BLACK)	
1	HOUSING	1	HIGH TEMP. THERMOPLASTIC	UL94V-0(BLACK)	
LTR	PART NAME	QTY	MATERIAL	REMARK	
DWN	LILY	DATE	2019.01.08	3RD ANGLE PROJECTION	
CHKD	ANDY	DATE	2019.01.08		
APVD	JON	DATE	2019.01.08	UNIT: mm	
JKCR Electronics Co., Ltd.				NAME	DC POWER JACK
				CAT. NO.	DCD-020-141BG
				DWN.NO.	E-020-141
					001