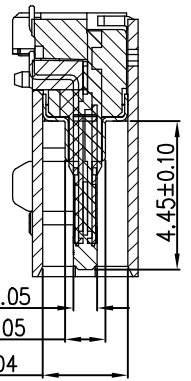
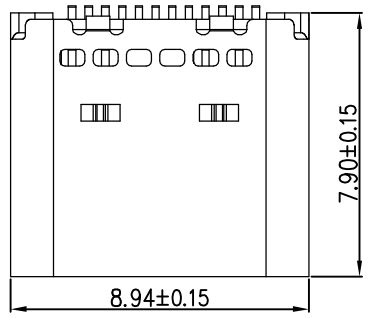
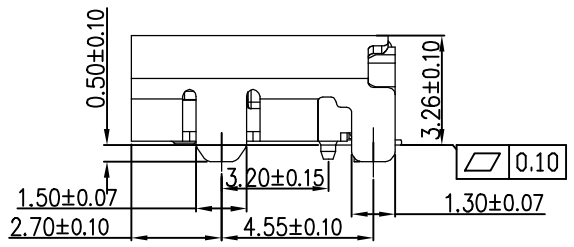
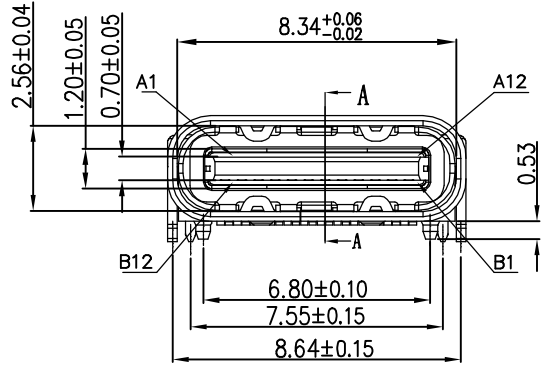


* RoHS COMPLIANT *

* REVISIONS				
LTR	DESCRIPTION	DATE	REVISED	APPROVED



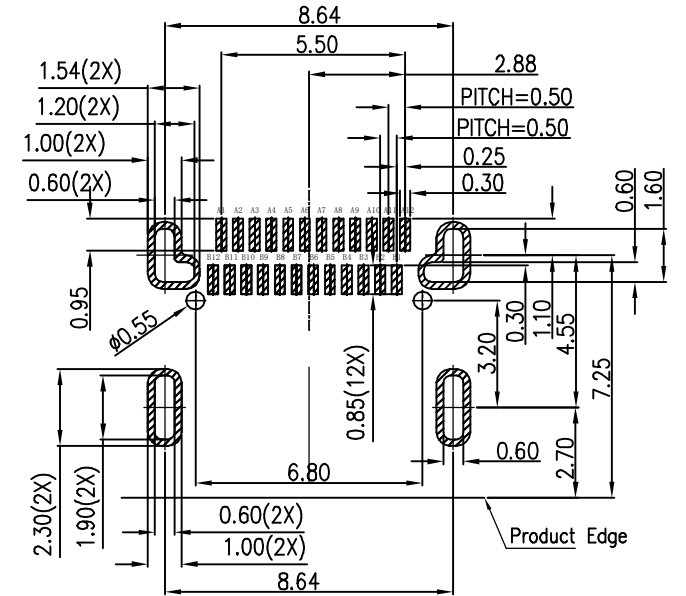
NOTE:
 1.MATERIAL:
 1.1 HOUSING:LCP+30%G.F UL94V-0 BLACK
 1.2 CONTACT:C7025, T=0.15mm: G/F PALTED ON CONTACT AREA & SOLDER AREA,Ni 50U" MIN. UNDERPLATED OVERALL,
 1.3 SHELL:SUS304, T=0.30mm: Ni 50U" MIN. PLATED OVERALL
 1.4 MID PLATE:SUS301, T=0.15mm;
 2.SPECIFICATION:
 2.1 CURRENT RATING:5A FOR VBUS & GND,0.25A FOR OTHER CONTACTS
 2.2 CONTACT RESISTANCE:40mΩ MAX. INITIAL;50mΩ MAX. AFTER TEST
 2.3 INSULATION RESISTANCE:100MΩ MIN.
 2.4 DIELECTRIC WITHSTAND VOLTAGE: 100V AC R.M.S.
 2.6 MATING FORCE:5-20N
 UNMATION FORCE:8-20N,AFTER TEST:6-20N
 2.7 DURABILITY:10000 CYCLES.
 2.8 OPERATING TEMPERATURE: -25°C~+85°C.
 2.9 IR REFLOW: THE PEAK TEMPERATURE ON THE BOARD SHALL BE MAINTAINED FOR 10 SECONDS AT 260°C.



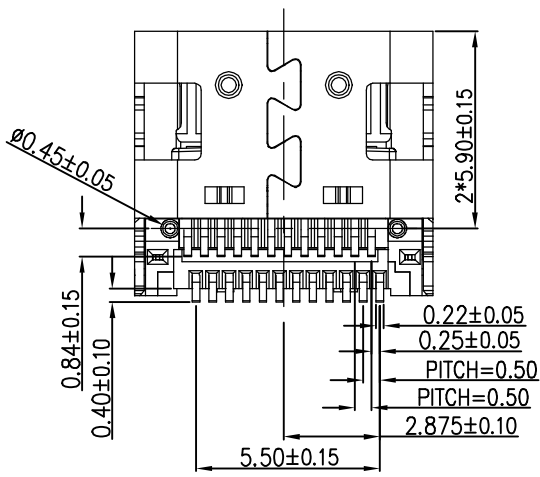
PART No.: JCU-104XX1002-A

PLATING: 31: G/F
 37: 30u"+G/F

PAKING: 2: REEL



RECOMMENDED PCB LAYOUT(TOP VIEW)



PIN NUMBER	SIGNAL NAME	PIN NUMBER	SIGNAL NAME
A1	GND	B12	GND
A2	SSTXp1	B11	SSRXp1
A3	SSTXn1	B10	SSRXn1
A4	VBUS	B9	VBUS
A5	CC1	B8	SBU2
A6	Dp1	B7	Dn2
A7	Dn1	B6	Dp2
A8	SBU1	B5	CC2
A9	VBUS	B4	VBUS
A10	SSRXn2	B3	SSTXn2
A11	SSRXp2	B2	SSTXp2
A12	GND	B1	GND

UNLESS OTHERWISE SPECIFIED, TOLERANCE ON DECIMAL: ±0.3

DWN	LILY	DATE	2023.12.13	3RD ANGLE PROJECTION	NAME	TYPE C 24PIN板上雙SMT帶柱
CHKD	ANDY	DATE	2023.12.13		CAT. NO.	JCU-104XX1002-A
APVD	JON	DATE	2023.12.13	UNIT: mm	DWN.NO.	JBL-104XX1002-A
JKCR Electronics Co., Ltd.					001	