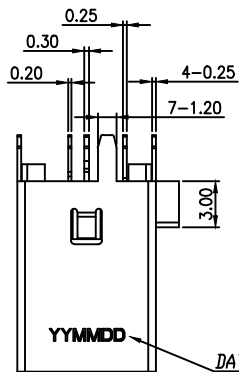
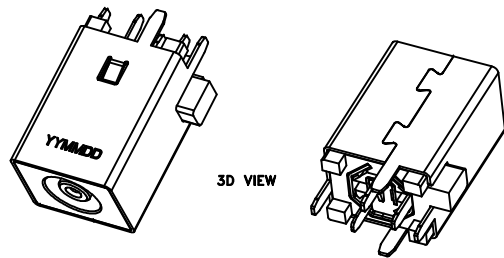
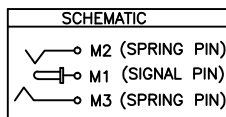
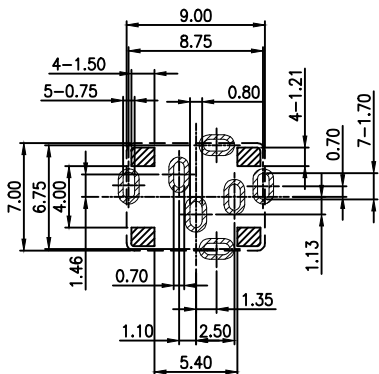
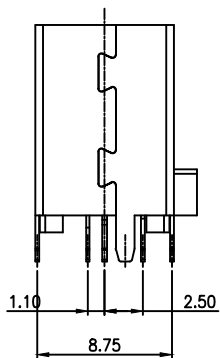
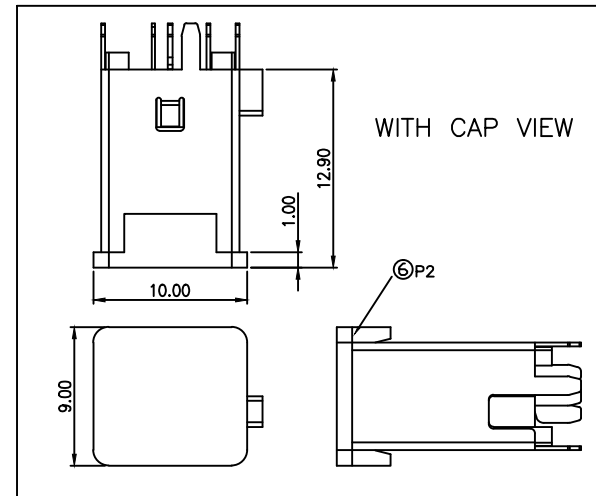
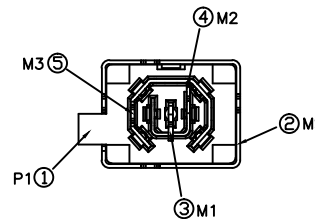
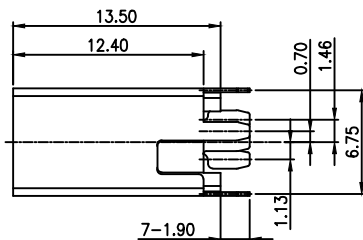
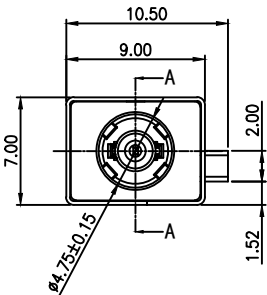
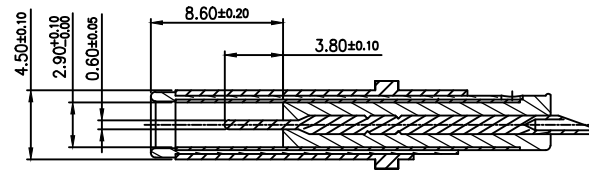
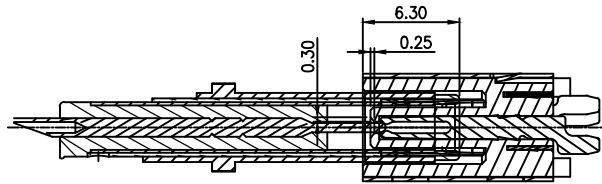
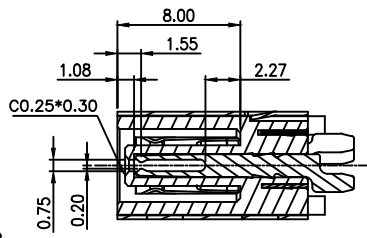


* RoHS COMPLIANT *



DATE CODE:
YYMMDD
YY:YEAR(15~)
MM:MONTH(01~12)
DD:DAY(01~31)



* REVISIONS				
LTR	DESCRIPTION	DATE	REVISED	APPROVED

SPECIFICATIONS:

1. ELECTRICAL CHARACTERISTICS:
 - 1-1. CONTACT CURRENT RATING: 30V 8A
 - 1-2. INSULATION RESISTANCE: 100M Ω MIN. AT 500V DC
 - 1-3. DIELECTRIC WITHSTANDING VOLTAGE: 500V AC FOR 1 MINUTE.
 - 1-4. CONTACT RESISTANCE: 30m Ω MAX.
2. MECHANICAL CHARACTERISTICS:
 - 2-1. INSERTION FORCE : 2.0Kg MAX.
 - 2-2. PLUG WITHDRAWAL FORCE : INITIAL1.0~2.0Kg; FINAL0.7~2.0Kg
3. DURABILITY TEST: 5,000 CYCLES.
4. PEAK TEMPEERATRE OF REFLOW SOLDING:260±5°C 5S.

⑥	P2_CAP	PA10T	UL94V-0	1	BLACK
⑤	M3_SPRING	C5210-EH	AU" 1U"	1	0.25T
④	M2_SPRING	C5210-EH		1	0.20T
③	M1_SIGNAL	C5210-EH	ALLOVER NICKEL 50u"Min	1	0.30T
②	MS_SHELL	SUS	Ni 50u"Min	1	0.25T
①	P1_HOUSING	PA10T	UL94V-0	1	BLACK
ITEM	DESCRIPTIONs	MATERIAL	FINISH	Q'TY	NOTE
DWN	LILY	DATE	2018.09.06	3RD ANGLE PROJECTION	NAME DC POWER JACK
CHKD	ANDY	DATE	2018.09.06		CAT. NO. DCD-020-152G
APVD	JON	DATE	2018.09.06		UNIT: mm
JKCR Electronics Co., Ltd.				DWN.NO.	E-020-152
					001

UNLESS OTHERWISE SPECIFIED, TOLERANCE ON DECIMAL: ±0.3